

(Concert)

Free Chord Chart

# All Or Nothing At All

JGC

1939

Arthur Altman

Jack Lawrence

A1

Am Am(maj7) Am<sup>7</sup> Am<sup>6</sup>

5 Am<sup>7</sup> Abm<sup>7</sup> Gm<sup>7</sup> C<sup>7</sup> Bb<sup>7</sup>

9 Em<sup>7(b5)</sup> A<sup>7(b9)</sup> Dm<sup>7</sup> Eb<sup>o7</sup>

13 Dm<sup>7</sup> Db<sup>7(#11)</sup> Cmaj<sup>7</sup> Bm<sup>7(b5)</sup> E<sup>7</sup>

A2

17 Am Am(maj7) Am<sup>7</sup> Am<sup>6</sup>

21 Am<sup>7</sup> Abm<sup>7</sup> Gm<sup>7</sup> C<sup>7</sup> Bb<sup>7</sup>

25 Em<sup>7(b5)</sup> A<sup>7(b9)</sup> Dm<sup>7</sup> Eb<sup>o7</sup>

29 Dm<sup>7</sup> Db<sup>7(#11)</sup> Cmaj<sup>7</sup> Bbm<sup>7</sup> Eb<sup>7</sup>

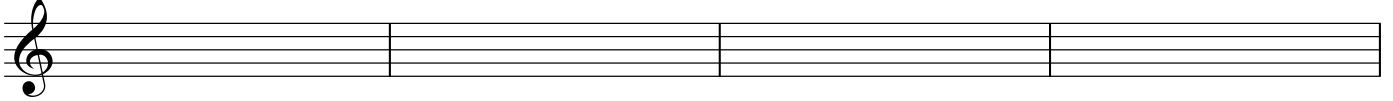
2

**B**

33 A $\flat$ maj7

B $\flat$ m7

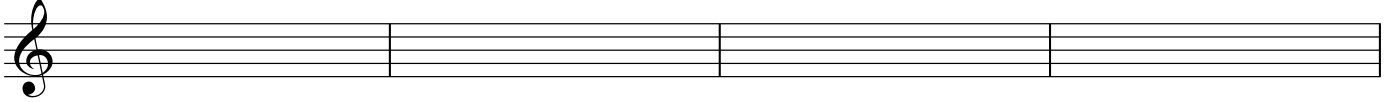
E $\flat$ 7



37 A $\flat$ maj7

B $\flat$ m7

E $\flat$ 7



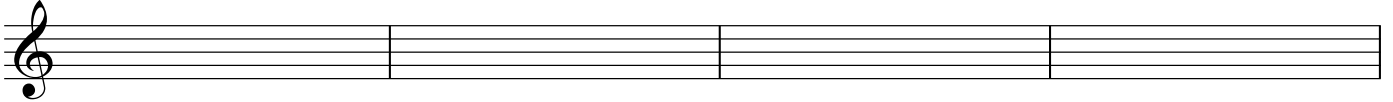
41 B $\flat$ m7

E $\flat$ 7

B $\flat$ m7

Gm7(b5)

C7



45 Fm7

Fm7/E $\flat$

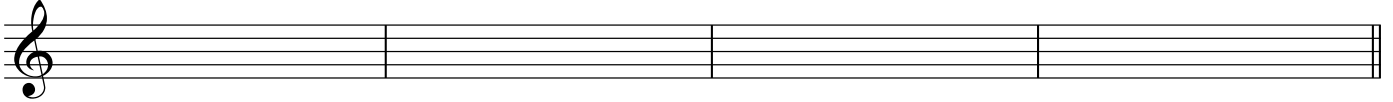
Dm7(b5)

G7(b9)

Cmaj7

Bm7(b5)

E7(b9)



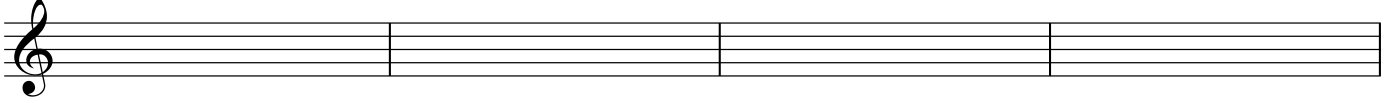
**A3**

49 Am

Am(maj7)

Am7

Am $^6$



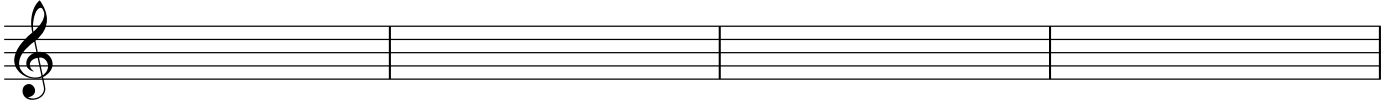
53 Am7

A $\flat$ m7

Gm7

C7

B $\flat$ 7

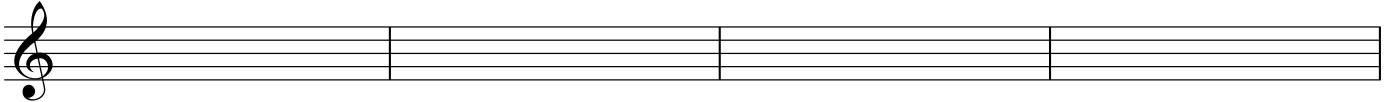


57 Em7(b5)

A7(b9)

Dm7

E7



61 Am7

Fm $^6$

C $^6$

E7(b9)

