

(Concert)

No More Blues (Chega de Saudade)

1958

Antonio Carlos Jobim
Vinicius de Moraes/Jon Hendricks

A1

1 Dm⁷ Dm⁷/C Bm⁷(b⁵)

A musical staff in 4/4 time with a key signature of one flat (Bb). The staff contains three measures. Above the staff, the chords Dm⁷, Dm⁷/C, and Bm⁷(b⁵) are written above the first, second, and third measures respectively.

5 Em⁷(b⁵) A⁷(b⁹) Dm⁷ Em⁷(b⁵) A⁷

A musical staff in 4/4 time with a key signature of one flat (Bb). The staff contains three measures. Above the staff, the chords Em⁷(b⁵), A⁷(b⁹), Dm⁷, Em⁷(b⁵), and A⁷ are written above the first, second, and third measures respectively.

9 Dm⁷ Bm⁷(b⁵) E⁷ Am⁷

A musical staff in 4/4 time with a key signature of one flat (Bb). The staff contains three measures. Above the staff, the chords Dm⁷, Bm⁷(b⁵), E⁷, and Am⁷ are written above the first, second, and third measures respectively.

13 Bbmaj⁷ A⁷(b⁹)

A musical staff in 4/4 time with a key signature of one flat (Bb). The staff contains three measures. Above the staff, the chords Bbmaj⁷ and A⁷(b⁹) are written above the first and second measures respectively.

A2

17 Dm⁷ Dm⁷/C Bm⁷(b⁵)

A musical staff in 4/4 time with a key signature of one flat (Bb). The staff contains three measures. Above the staff, the chords Dm⁷, Dm⁷/C, and Bm⁷(b⁵) are written above the first, second, and third measures respectively.

21 Em⁷(b⁵) A⁷(b⁹) Dm⁷ D⁷(b⁹)

A musical staff in 4/4 time with a key signature of one flat (Bb). The staff contains three measures. Above the staff, the chords Em⁷(b⁵), A⁷(b⁹), Dm⁷, and D⁷(b⁹) are written above the first, second, and third measures respectively.

25 Gm⁷ A⁷ Dm⁷ Dm⁷/C

A musical staff in 4/4 time with a key signature of one flat (Bb). The staff contains three measures. Above the staff, the chords Gm⁷, A⁷, Dm⁷, and Dm⁷/C are written above the first, second, and third measures respectively.

29 Bm⁷(b⁵) Bbm⁶ Dm⁷ A⁷

A musical staff in 4/4 time with a key signature of one flat (Bb). The staff contains three measures. Above the staff, the chords Bm⁷(b⁵), Bbm⁶, Dm⁷, and A⁷ are written above the first, second, and third measures respectively. The staff ends with a double bar line and two sharps (F# and C#).

B

33 Dmaj7

B7(b13)

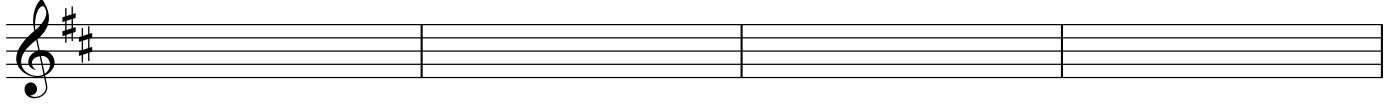
Em7



37 A7(sus4)

D°7

Dmaj7



41 F#m7

F°7

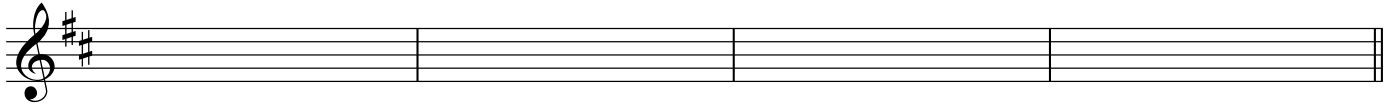
Em7



45 E7

Em7(b5)

A7

**C**

49 Dmaj7

Bm7

E7



53 F#7

Bm7

Bbm7

Am7

D7



57 Gmaj7

Gm7

F#m7

B7



61 E7

Em7

A7

F#m7(b5)

B7



65 E7

Em7

A7

D6

A7(b9)

